



THE RESERVE AT CHALFONT

The Jordan

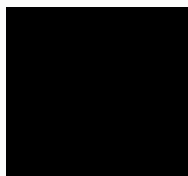
HOMESITE 49 | 7 WARREN DRIVE | CHALFONT, PA 18914

Designer Appointed Features | EXTERIOR SELECTIONS

Designer Appointed Features are home detailed and finished curated by the talented design professionals responsible for the distinctive looks found in our model homes.



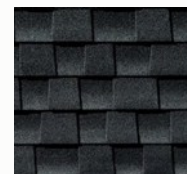
HORIZONTAL SIDING
Seagrass



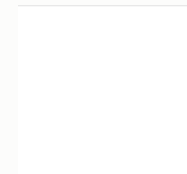
FRONT DOOR
Black



STONE
Cascade Ledge
Mystic



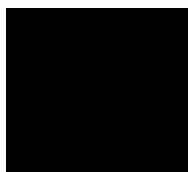
ROOF
Charcoal



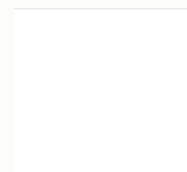
WINDOWS
White



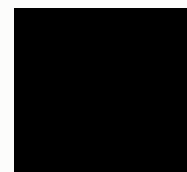
BOARD & BATTEN
White



GARAGE DOOR
Black



TRIM
White



METAL ROOF
Black

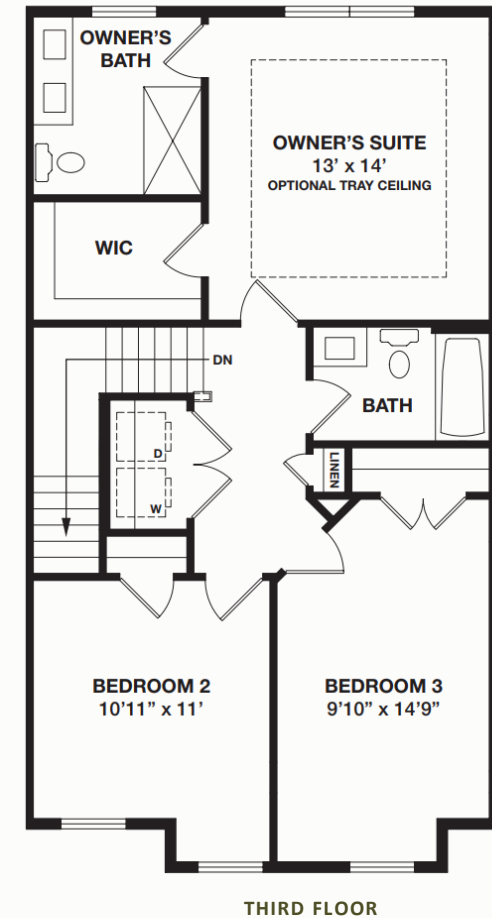
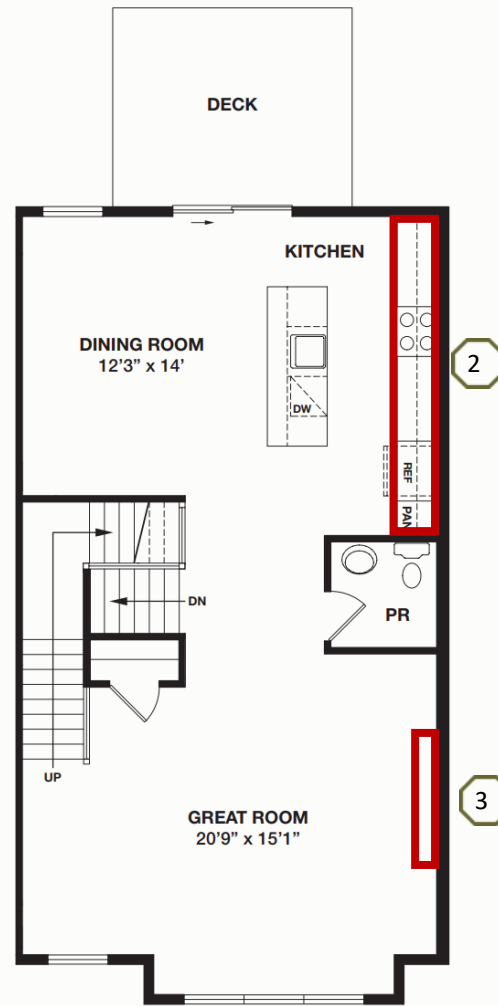
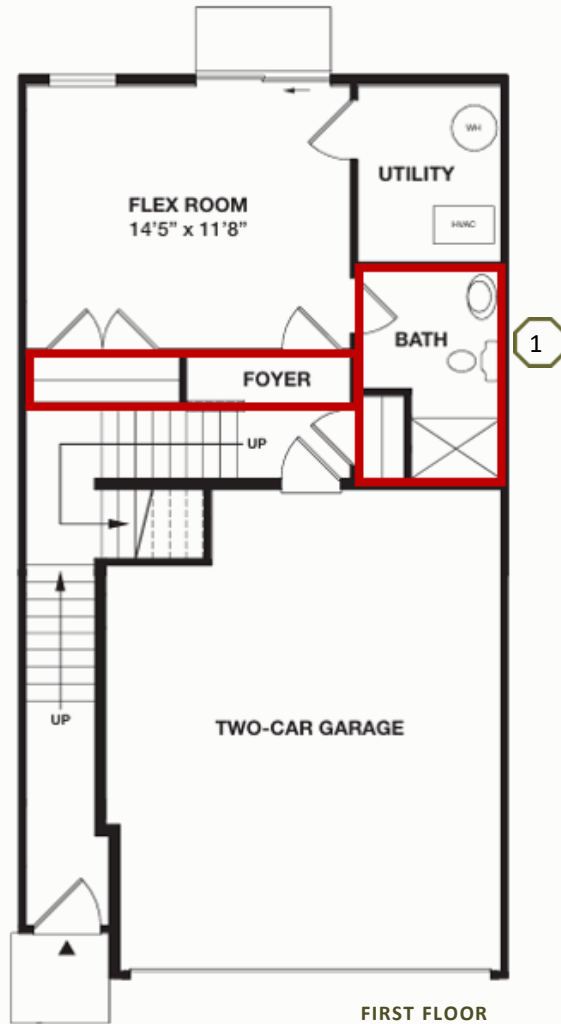
THE RESERVE AT CHALFONT | **THE JORDAN**
HOMESITE 49 | 7 WARREN DRIVE | CHALFONT, PA 18914

Prices and offers subject to change without notice. This is not an offering where prohibited by law. Images are for representational purposes only and actual product may differ. Not all images may be shown. See online or onsite consultants for details



Designer Appointed Features | STRUCTURAL OPTIONS

Designer Appointed Features are home detailed and finished curated by the talented design professionals responsible for the distinctive looks found in our model homes.



- 1 1ST FLOOR FOYER & FULL BATH
INCLUDES FOUNDATION, FRAMING, AND FINISHED MATERIALS
- 2 GOURMET KITCHEN LAYOUT
- 3 BOYD CABINET & 50" ELECTRICAL FIREPLACE

- Upgraded Electrical Throughout
- Low Voltage Included Package
- Garage Door Opener with 1 Remote & Keypad
- Concealed Fire Sprinklers throughout



Designer Appointed Features | INTERIOR SELECTIONS

Designer Appointed Features are home detailed and finished curated by the talented design professionals responsible for the distinctive looks found in our model homes.

1 INTERIOR TRIM PAINT

Benjamin Moore Color
White (Satin)

2 WALL & CEILING PAINT

Benjamin Moore Color
Mountain Peak White

3 CARPET

Shaw—Gifted Art
Subtle Clay—Lvl 2

4 LUXURY VINYL PLANK

Shaw
Sabbia—Lvl 2
1st Floor Opt. Foyer, 2nd Floor House Package,
3rd Floor Laundry Room

5 LIGHTING

Kichler—Armand
Black—Dining Room

6 TRIM

2 1/4" Window & Door Casing
3 1/4" Baseboards
4 5/8" Crown Molding in Owner's Suite
Semi-Gloss White

7 INTERIOR DOOR HARDWARE

Schlage Hardware—Flair Lever
Satin Nickel

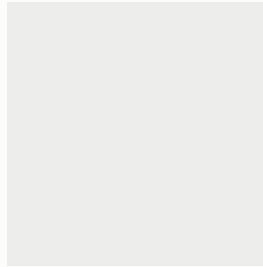
8 INTERIOR DOORS

Masonite—Riverside
Hollow Core
White

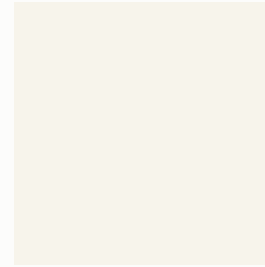
9 ELECTRIC FIREPLACE

Boyd Ready-to-Finish Cabinet Fireplace

1



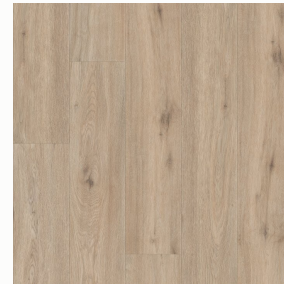
2



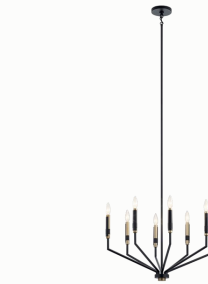
3



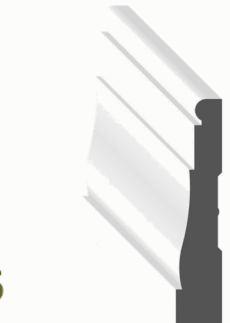
4



5



6



7



8



9



Designer Appointed Features | KITCHEN

Designer Appointed Features are home detailed and finished curated by the talented design professionals responsible for the distinctive looks found in our model homes.

1 KITCHEN CABINETS

Century Carriage House—Lvl 2
Annandale Arctic—Perimeter
Annandale Black—Island

2 HARDWARE

Century
Hillmont Pull —Lvl 2
Matte Black

3 LUXURY VINYL PLANK

Shaw
Sabbia—Lvl 2

4 SINK

Kohler—Whitehaven Undermount Farmhouse Sink
White

5 BACKSPLASH

MSI Tile
Urbano Pure White Cool Subway Glossy—Lvl 1

6 FAUCET

Kohler—Crue
Matte Black

7 COUNTERTOP

MSI Quartz
Calacatta Venice—Lvl 5

8 LIGHTING

Kichler—Everly (2)
Black



Designer Appointed Features | KITCHEN APPLIANCES

Designer Appointed Features are home detailed and finished curated by the talented design professionals responsible for the distinctive looks found in our model homes.

1 HOOD

GE 36" Wall-Mount Pyramis Hood
Stainless Steel

2 COOKTOP

GE 36" Built-In Gas Cooktop with 5 Burners
Stainless Steel

3 MICROWAVE/OVEN WALL COMBO

GE 30" Microwave/Oven Wall Combination
Stainless Steel

4 DISHWASHER

GE ENERGY STAR Top Control Dishwasher with
Sanitize Cycle
Stainless Steel

5 GARBAGE DISPOSAL/AIR SWITCH

Included - GE 1/2 HP Continuous Feed Garbage
Disposer - Corded
Black
InSinkErator—Sink Top Air Switch Button
Matte Black

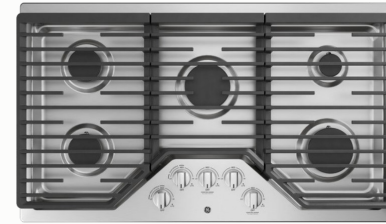
6 REFRIGERATOR

GE Profile ENERGY STAR 23.1 Cu.Ft. Counter-
Depth French-Door Refrigerator
Stainless Steel

1



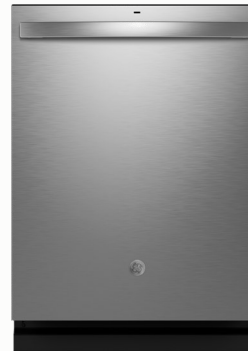
2



3



4



5



6



Designer Appointed Features | OPTIONAL 1ST FLOOR BATH

Designer Appointed Features are home detailed and finished curated by the talented design professionals responsible for the distinctive looks found in our model homes.



1



2



3



4



5

6



7



8



9

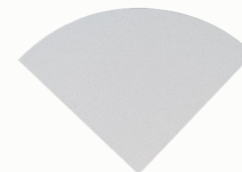
10



11



12



13

1 TILE

MSI-Lvl 3-Package 2
Wall Color-Urbano Pure White Subway
Floor Color-Aspenwood Artic Wood Tile

4 HARDWARE

Century—Lvl 2
Kingsbridge Rectangular Knob
Matte Black

7 MIRROR

H2- Included Clipped Rectangle
Mirror
Clear

10 FAUCET

Kohler—Tone
Matte Black

12 SHOWER ACCESSORY

Shower Corner Shelf
Snow White

2 SHOWER DOOR

H2—Frameless Shower Door
Matte Black

5 ACCESSORY PACKAGE

Kohler—Elate
Matte Black

8 TOILET & LEVER

Kohler-Highline Comfort Height
White
Kohler- Highline Toilet Lever
Matte Black

11 SHOWER FIXTURE

Kohler—Tone Shower Fixture
Matte Black

13 SHOWER FIBERGLASS PAN

White—Included

3 CABINETS

Century—Lvl 1
Coventry—Sand

6 LIGHT FIXTURE

Kichler—Marette
Black

9 SINK

Rynone Cultured Marble-Wave Rectangle
White



Designer Appointed Features | 2ND FLOOR POWDER ROOM

Designer Appointed Features are home detailed and finished curated by the talented design professionals responsible for the distinctive looks found in our model homes.

1 LIGHTING

Kichler—Marette
Black

2 MIRROR

H2—Included Clipped Beveled Oval Mirror
Clear

3 PEDESTAL SINK

Kohler-Archer 24" with Single Faucet Hole
White

4 FAUCET

Kohler—Tone
Matte Black

5 ACCESSORY PACKAGE

Kohler—Elate
Matte Black

6 LUXURY VINYL PLANK

Shaw
Sabbia—Lvl 2

7 TOILET

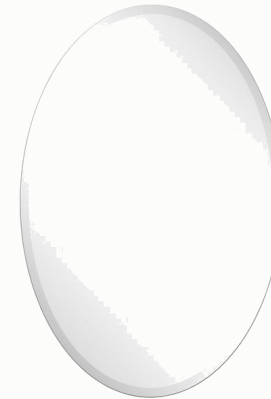
Kohler—Highline Comfort Height Toilet with
Cachet Quiet-Close Grip-Tight Elongated Toilet
Seat
White

8 TOILET LEVER

Kohler—Highline Toilet Trip Lever
Matte Black



1



2



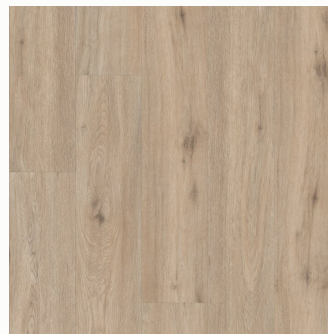
3



4



5



6



7



8



Designer Appointed Features | HALL BATH

Designer Appointed Features are home detailed and finished curated by the talented design professionals responsible for the distinctive looks found in our model homes.



1 TILE

MSI—Level 3 Package 2
Wall Color—Urbano Pure White Subway
Floor Color—Aspenwood Arctic Wood Tile

2 CABINETS

Century—Lvl 1
Coventry—Sand

3 HARDWARE

Century—Lvl 2
Kingsbridge Rectangular Knob
Matte Black

4 SINK & FAUCET

Rynone Cultured Marble-Wave Rectangle
White
Kohler—Tone
Matte Black

5 LIGHT FIXTURE

Kichler—Meller
Black

6 MIRROR

H2—Clipped Rectangle Mirror
Width of Vanity
Clear—Included

7 TOILET & LEVER

Kohler—Highline Comfort Height Toilet
and Elongated Seat
White
Kohler—Highline Toilet Trip Level
Matte Black

8 TUB & DRAIN

Sterling-Performa
White—Included
Watco Lift & Turn Drain
Wrought Iron

9 SHOWER/TUB FIXTURE

Kohler—Tone
Matte Black

10 ACCESSORY PACKAGE

Kohler—Elate
Matte Black



Designer Appointed Features | OWNER'S SUITE BATHROOM

Designer Appointed Features are home detailed and finished curated by the talented design professionals responsible for the distinctive looks found in our model homes.



1 TILE

MSI-Lvl 2-Package 1
Wall Color-Dymo Stripe White Glossy
Floor Color-Charisma White

4 HARDWARE

Century—Lvl 2
Hillmont Pull & Kinney Knob
Matte Black

7 MIRROR

H2— 2 Clipped Rectangle Mirror
Clear—Included

10 FAUCET

Kohler—Tone
Matte Black

12 SHOWER ACCESSORY

Shower Corner Shelf
Snow White

2 SHOWER DOOR

H2—Frameless Shower Door
Matte Black

5 ACCESSORY PACKAGE

Kohler—Tone
Matte Black

8 TOILET & LEVER

Kohler-Highline Comfort Height
White
Kohler—Highline Toilet Lever
Matte Black

11 SHOWER FIXTURE

Kohler—Tone Shower Fixture
Matte Black

13 SHOWER FIBERGLASS PAN

MAAX B3X 6032 Pan—Included

3 CABINETS

Century—Lvl 2
Avalon—Walnut

6 LIGHT FIXTURE

Kichler—Meller
Black

9 SINK

Rynone Cultured Marble-Wave Rectangle
White



THE RESERVE AT CHALFONT | **THE JORDAN**
HOMESITE 49 | 7 WARREN DRIVE | CHALFONT, PA 18914

Prices and offers subject to change without notice. This is not an offering where prohibited by law.
Images are for representational purposes only and actual product may differ. Not all images may be
shown. See online or onsite consultants for details

