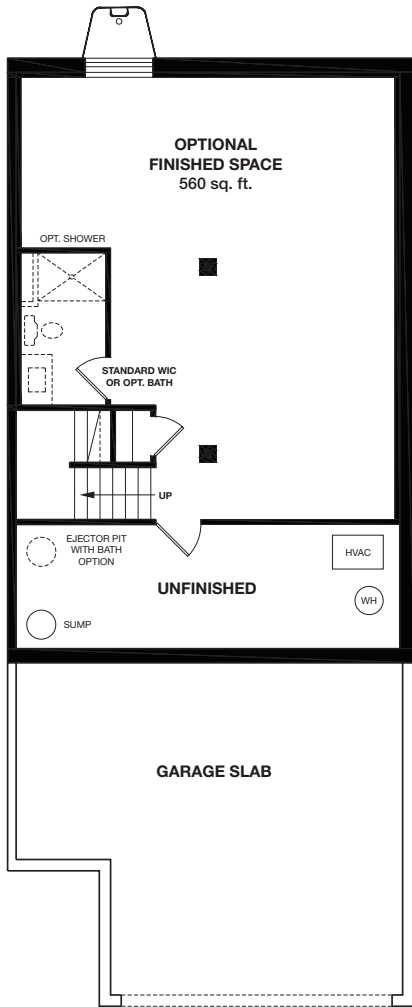


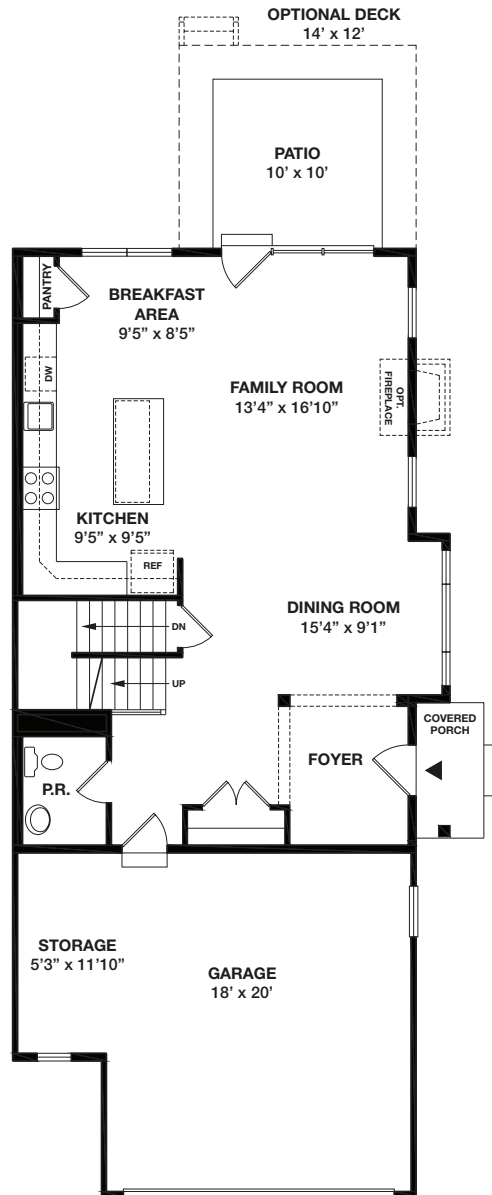
# THE ADDIS END TOWNHOME



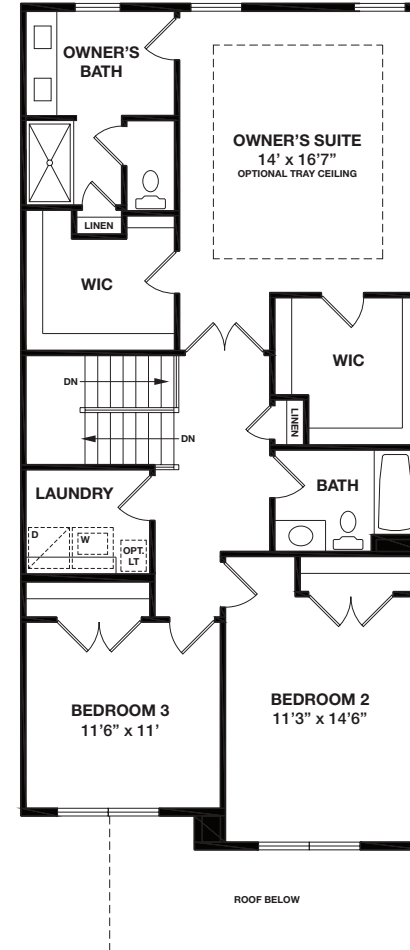
THE RESERVE AT  
SPRING MILL



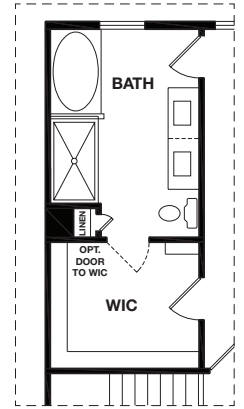
BASEMENT



FIRST FLOOR



SECOND FLOOR



OPTIONAL LUXURY  
OWNER'S BATH LAYOUT

[sales@reserveatpringmill.com](mailto:sales@reserveatpringmill.com) • 215.678.4420 • [reserveatpringmill.com](http://reserveatpringmill.com)

Refrigerator, washer and dryer are optional and are not standard features when purchasing a home. All dimensions, features and amenities are approximate and subject to change without notice. Windows vary with different elevations. Please see sales consultant for more details. Builder is not responsible for printer's errors and omissions. The above plans are preliminary planning documents, depicting the townhomes to be built at The Reserve at Spring Mill. All plans, renderings, illustrations and descriptions are intended for preview, pre-marketing purposes only, and it is understood by all parties, that there may be revisions and alterations to any aspect of the community depicted in these brochure materials. These are preliminary documents ONLY and a full review of the final architectural plans and standard features will be required, prior to all final sales. ©Judd Builders. 06.14.19

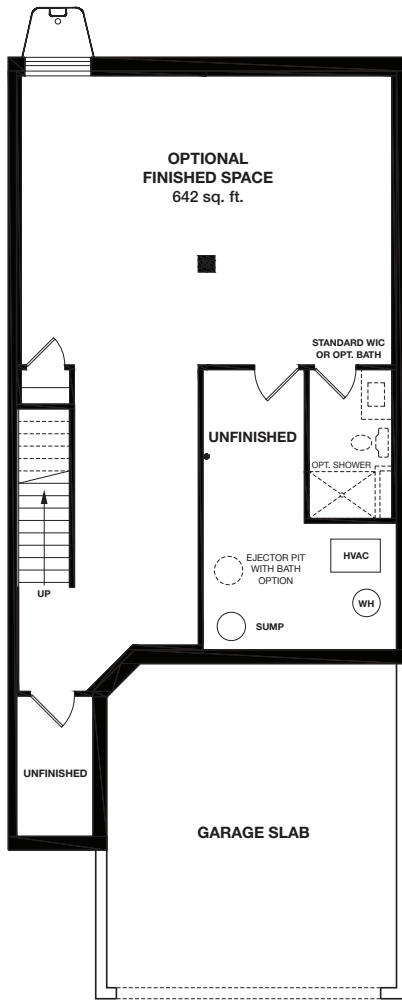


# THE BECKETT

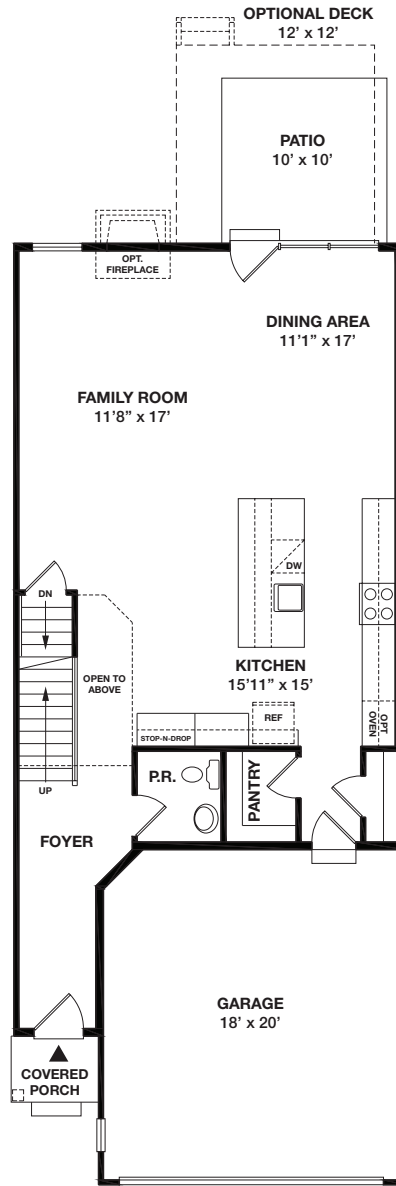
## INTERIOR TOWNHOME



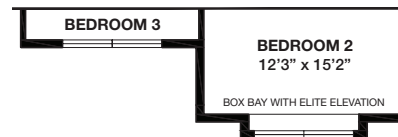
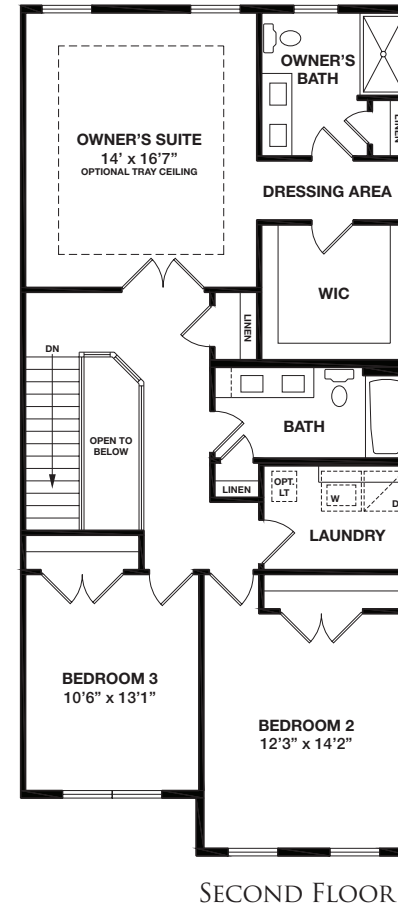
THE RESERVE AT  
SPRING MILL



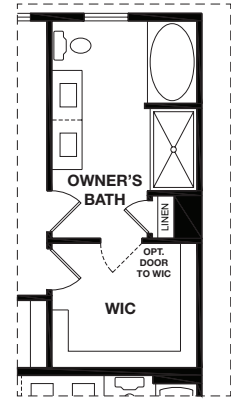
BASEMENT



FIRST FLOOR



ELITE ELEVATION



OPTIONAL LUXURY  
OWNER'S BATH LAYOUT

sales@reserveatpringmill.com • 215.678.4420 • reserveatpringmill.com

Refrigerator, washer and dryer are optional and are not standard features when purchasing a home. All dimensions, features and amenities are approximate and subject to change without notice. Windows vary with different elevations. Please see sales consultant for more details. Builder is not responsible for printer's errors and omissions. The above plans are preliminary planning documents, depicting the townhomes to be built at The Reserve at Spring Mill. All plans, renderings, illustrations and descriptions are intended for preview, pre-marketing purposes only, and it is understood by all parties, that there may be revisions and alterations to any aspect of the community depicted in these brochure materials. These are preliminary documents ONLY and a full review of the final architectural plans and standard features will be required, prior to all final sales. ©Judd Builders. 06.14.19

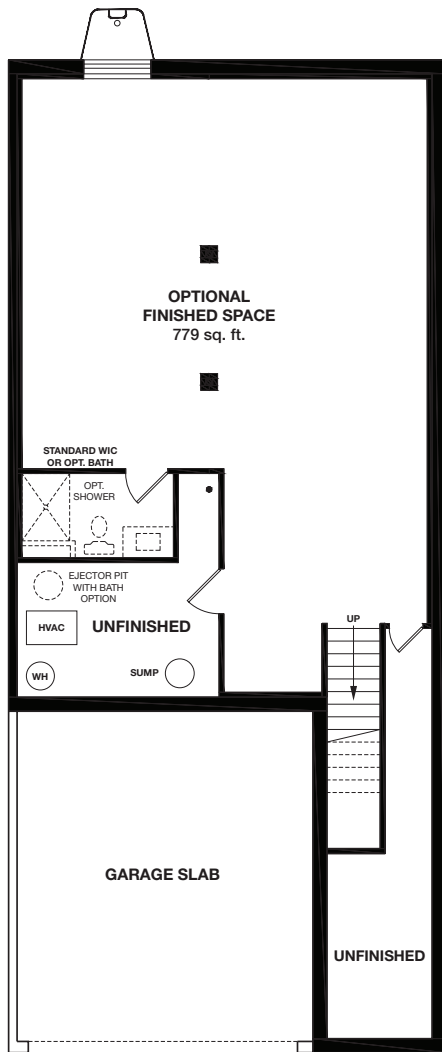


# THE CYPRUS

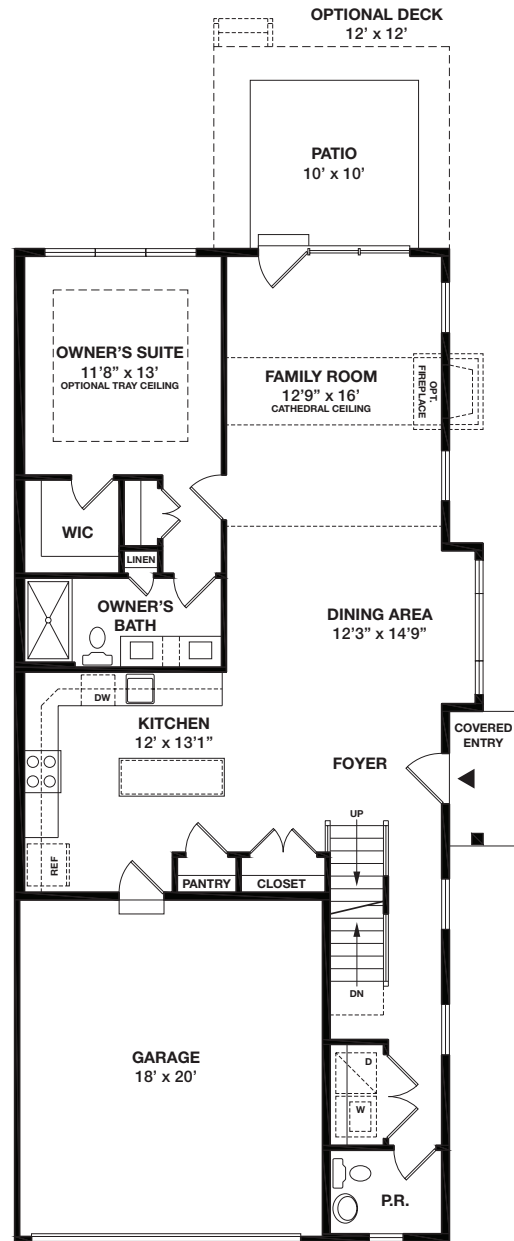
## END TOWNHOME



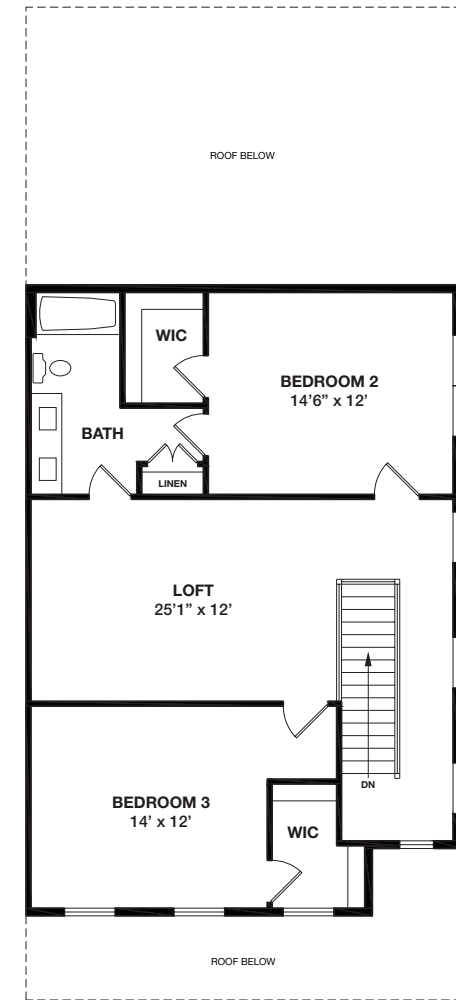
THE RESERVE AT  
SPRING MILL



BASEMENT



FIRST FLOOR



SECOND FLOOR

[sales@reserveatpringmill.com](mailto:sales@reserveatpringmill.com) • 215.678.4420 • [reserveatpringmill.com](http://reserveatpringmill.com)

Refrigerator, washer and dryer are optional and are not standard features when purchasing a home. All dimensions, features and amenities are approximate and subject to change without notice. Windows vary with different elevations. Please see sales consultant for more details. Builder is not responsible for printer's errors and omissions. The above plans are preliminary planning documents, depicting the townhomes to be built at The Reserve at Spring Mill. All plans, renderings, illustrations and descriptions are intended for preview, pre-marketing purposes only, and it is understood by all parties, that there may be revisions and alterations to any aspect of the community depicted in these brochure materials. These are preliminary documents ONLY and a full review of the final architectural plans and standard features will be required, prior to all final sales. ©Judd Builders. 06.14.19

